

**IBM ThinkPad 770
Setup Guide**

IBM

**IBM ThinkPad 770
Setup Guide**

First Edition (September 1997)

IBM might not be offering the products, services, or features discussed in this document in all countries, and the information is subject to change without notice. Consult your local representative for information on the products, services, and features available in your area.

The following paragraph does not apply to the United Kingdom or any country where such provisions are inconsistent with local law:

INTERNATIONAL BUSINESS MACHINES CORPORATION PROVIDES THIS PUBLICATION "AS IS" WITHOUT ANY WARRANTY OF ANY KIND, EITHER EXPRESS OR IMPLIED, INCLUDING, BUT NOT LIMITED TO, THE LIMITED WARRANTIES OF MERCHANTABILITY OR FITNESS FOR A PARTICULAR PURPOSE. Some states do not allow disclaimers or express or implied warranties in certain transactions; therefore, this statement may not apply to you.

This publication could include technical inaccuracies or typographical errors. Changes are periodically made to the information herein; these changes will be incorporated in new editions of the publication. IBM may make improvements or changes in the products or the programs described in this publication at any time.

Requests for technical information about IBM products should be made to your IBM Authorized Dealer or your IBM Marketing Representative.

Copyright International Business Machines Corporation 1997. All rights reserved. Note to U.S. Government Users – Documentation related to restricted rights – Use, duplication, or disclosure is subject to restrictions set forth in GSA ADP Schedule Contract with IBM Corp.

Notices

References in this publication to IBM products, programs, or services do not imply that IBM intends to make these available in all countries in which IBM operates. Any reference to an IBM product, program, or service is not intended to state or imply that only that IBM product, program, or service may be used. Any functionally equivalent product, program, or service that does not infringe any of the intellectual property rights of IBM may be used instead of the IBM product, program, or service. The evaluation and verification of operation in conjunction with other products, except those expressly designated by IBM, are the responsibility of the user.

IBM may have patents or pending patent applications covering subject matter in this document. The furnishing of this document does not give you any license to these patents. You can send license inquiries, in writing, to the IBM Director of Licensing, IBM Corporation, 500 Columbus Avenue, Thornwood, NY 10594, U.S.A.

Trademarks

IBM, ThinkPad, and TrackPoint are trademarks of the IBM Corporation in the United States or other countries or both:

Microsoft, Windows, the Windows 95 logo, and Windows NT are trademarks or registered trademarks of Microsoft Corporation.

What's in This Book

Thank you for selecting the ThinkPad Computer.

Read this book to set up the hardware and software of your new notebook computer. After you set up your computer, you will be able to use it for daily operation.

Unpacking and Checking Your Items 2

Knowing Your Controls and Switches 4

Setting Up the Hardware 6

Using the New TrackPoint 9

Setting Up Windows 95 10

Shutting Down Windows 15

For More Information 16

Related Publications

You should also read the following manuals to familiarize yourself with your new computer:

- Up and Running*
- User's Guide*

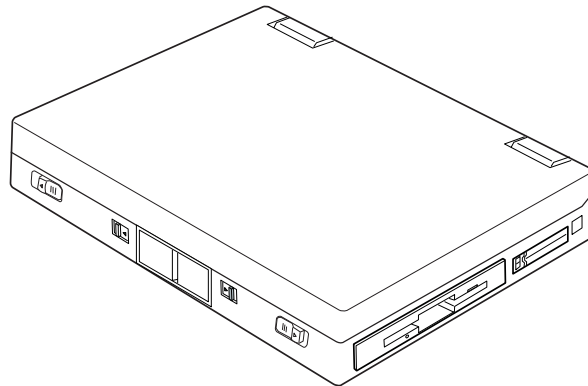
Unpacking and Checking Your Items

Be Careful

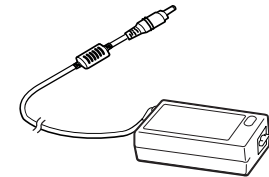
When unpacking your computer:

- Do not drop it.
- Avoid placing heavy objects on it.
- Do not damage the Liquid Crystal Display (LCD) screen.

Computer



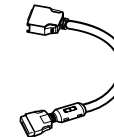
56W AC Adapter



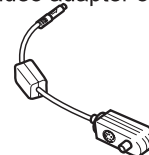
Power cord



Diskette drive cable



Video in-out cable
(Models with DVD/Enhanced video adapter only)

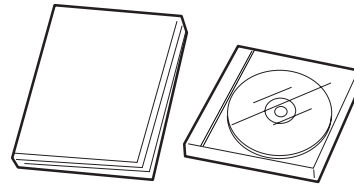


Li-ion battery (installed)

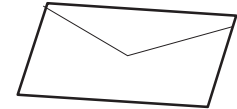
-
- Recovery CD-ROM package
(Windows 95 preload model only)



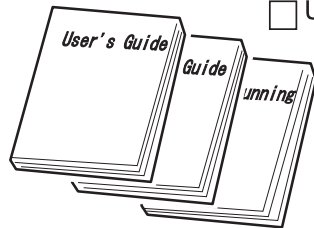
- Introducing Microsoft Windows NT
or
- Introducing Microsoft Windows 95



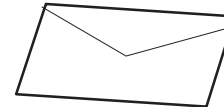
- ThinkPad envelope
 - Customer Registration Form
 - International Service Information
 - International Program License Agreement booklet
 - International Program License Agreement pointers
 - Multilingual License Information
 - Other brochures and flyers



- User's Guide
 - Setup Guide
 - Up and Running

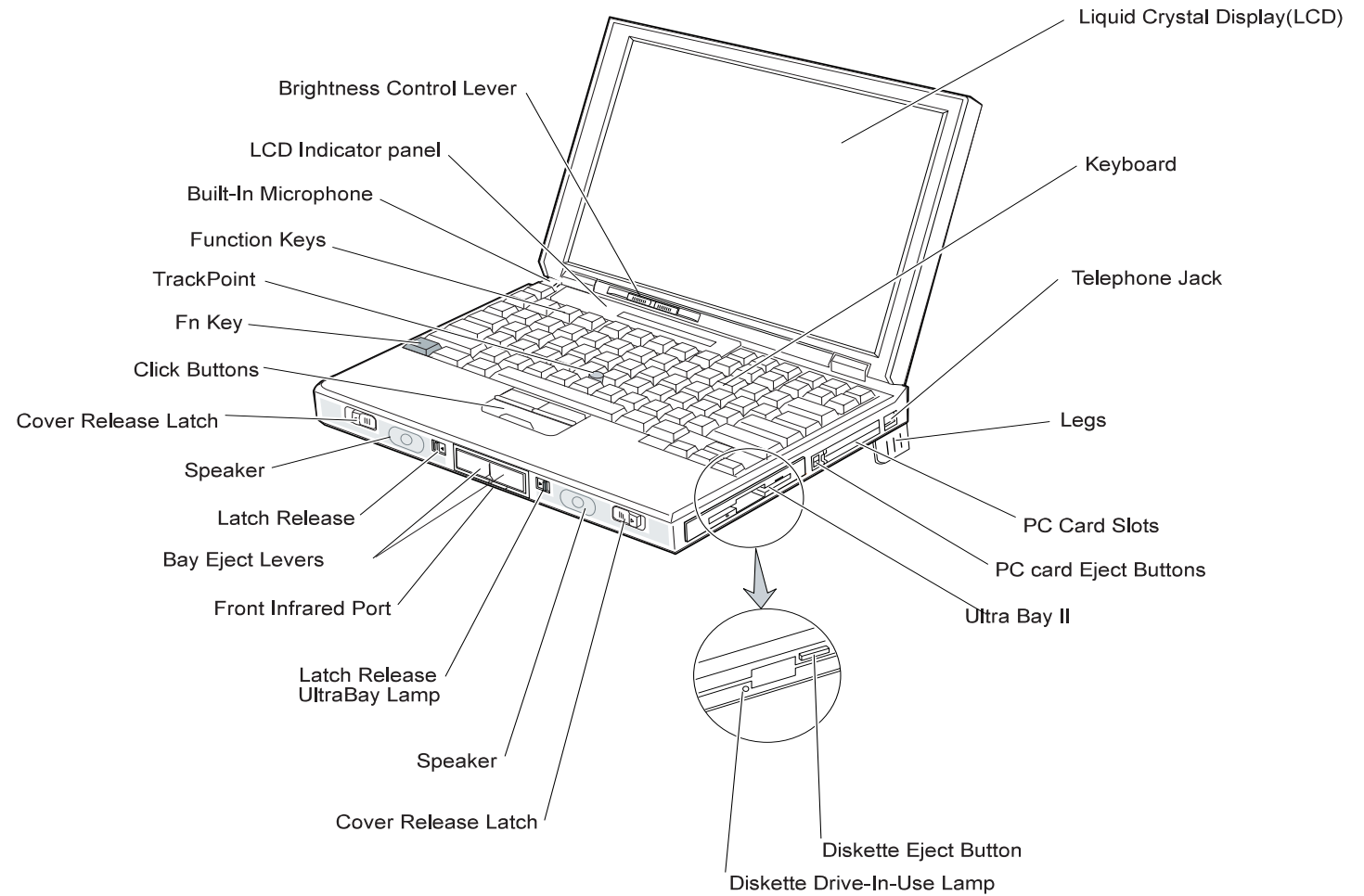


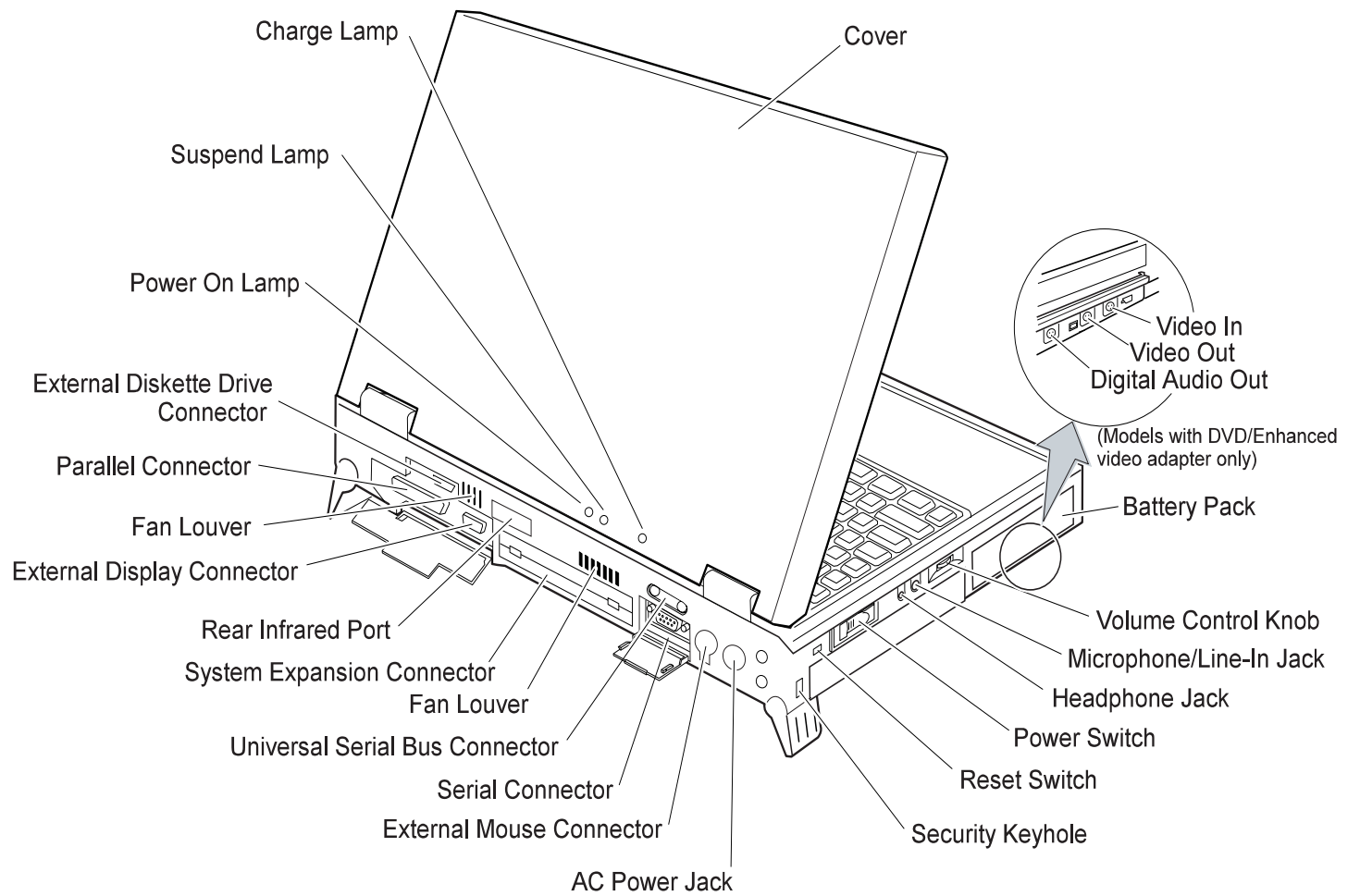
- Miscellaneous items envelope
 - Spare caps for the TrackPoint



If an item is missing or damaged
Contact your place of purchase if any item is missing or damaged.

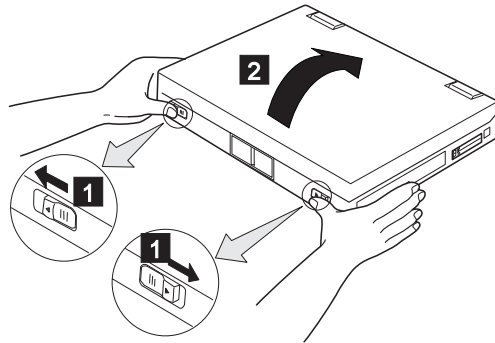
Knowing Your Controls and Switches





Setting Up the Hardware

- 1** Slide the left and right **cover release latches** 1 outward and open the **cover** 2 .



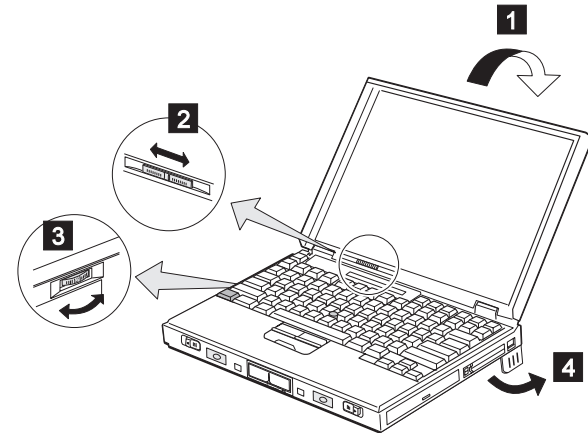
- 2** Adjust the following:


LCD screen 1 to a comfortable angle for viewing.

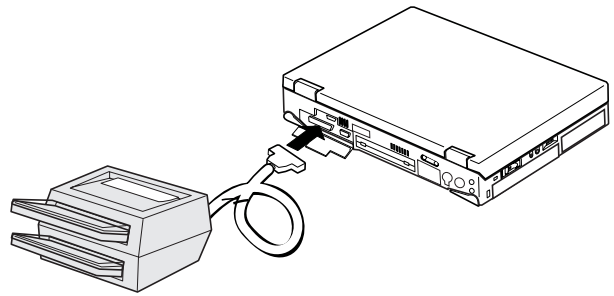
Brightness control 2  to the middle position.

Speaker volume control 3  to about level 3.

Legs 4 either opened or closed.

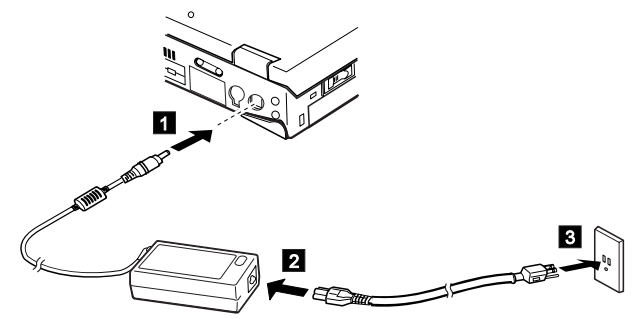


-
- 3** If you have a printer, connect it to the **parallel connector** () at the rear of the computer and turn on the printer power.



- 4** Do the following in sequence:
- a) Connect the AC Adapter to the ac power jack 1 .
 - b) Connect one end of the power cord to to the AC Adapter 2 .

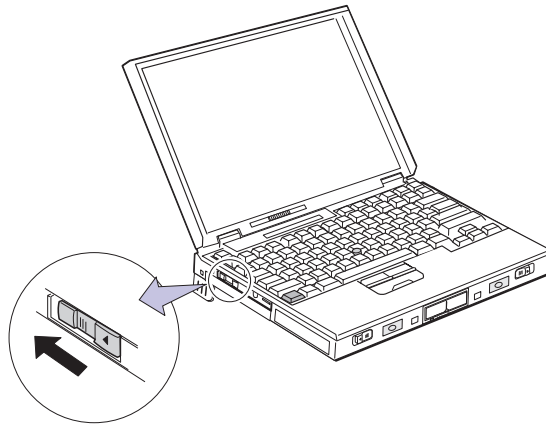
- c) Connect the other end to the power outlet 3 .



 **DANGER**

Do not open the AC Adapter case. The AC Adapter is permanently sealed and cannot be repaired.

-
- 5** Slide the **power switch** and turn on the computer power. The switch automatically snaps back to the original position.



If your computer is preloaded with Windows 95:

After a few minutes, messages appear and a single beep; then the “Regional Settings” window appears.

To continue Windows 95 setup, see “Setting Up Windows 95” on page 10.

If your computer is preloaded with Windows NT:

After a few minutes, messages appear and a single beep; then the “Windows NT Setup” windows appears.

Follow the instructions on the screen and complete the Windows NT setup.

Note: Product ID is in the cover page of the *Introducing Microsoft Windows NT*

To shut down your computer, see “Shutting Down Windows” on page 15.

Any other window may mean a setup failure. Go to Chapter 4 of the *ThinkPad 770 User's Guide*.

Using the New TrackPoint

The new TrackPoint (called the TrackPoint) is a unique device for moving the pointer on the screen. It functions like a mouse. The left and right click buttons function like the left and right click buttons on a mouse, so you can perform all mouse operations with the TrackPoint. Additional center click button is for scrolling and other functions.

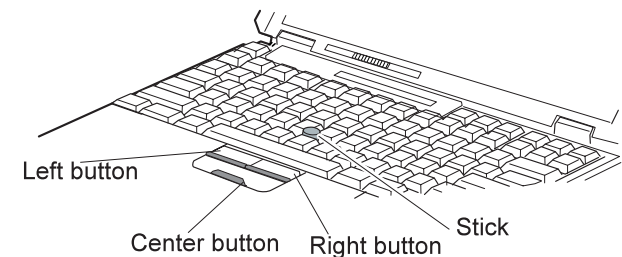
To move the pointer, press gently on the red-topped stick at the center of the keyboard with your left or right index finger in the direction you want it to move.

To drag and drop an object:

1. Press gently on the stick move the pointer to the object (an icon or a window) you want to move.
2. Press and hold the left or the right click button with your left or right thumb.

3. Move the pointer to the position where you want it to be.
4. Release the click button.

Note: **Click** means pressing the left click button once.
Double click means pressing the left click button twice within 1 second.

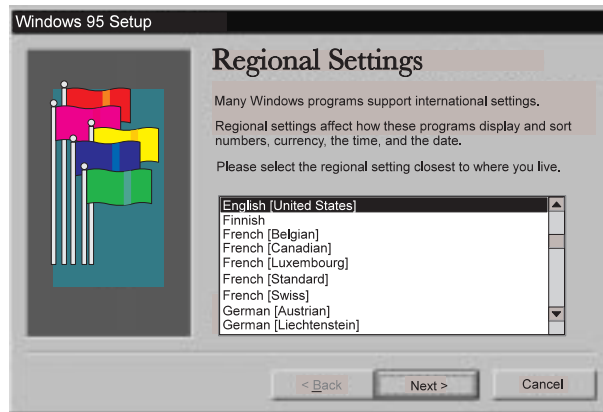


For more information about the new TrackPoint and the new functions, See *User's Guide*.

Setting Up Windows 95

Note: If the system stops while you are setting up Windows 95, turn the power off and then on again.

- 1** The following window should be displayed on your screen. Select the language that you will be using from the list and click on **Next**.



- 2** The "Keyboard Layout" window appears. Select the keyboard you will be using from the list. Then click on **Next**.

- 3** The "User Information" window appears. Type your name and company name in the fields. Then click on **Next**.



- 4** The "License Agreement" window appears. Read the contents of the window. If you accept the agreement, click on **I accept the agreement**. Then click on **Next**.



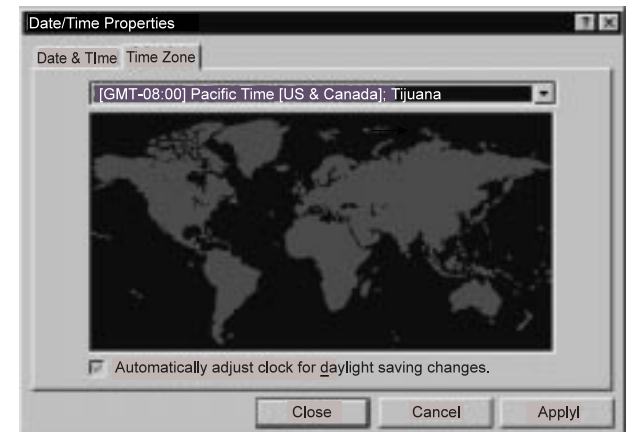
- 5** The “Certificate of Authenticity” window appears. Look at the cover page of *Introducing Microsoft Windows 95*. On your “Certificate of Authenticity,” find the “Product ID” above the bar code. In the three input fields of the window, type that number. Then click on **Next**.



- 6** The “Start Wizard” window appears. Click on **Finish** to start Windows 95.
- 7** Some messages might appear, and then the “Date/Time Properties” window appears. Click on

- ▼ and select the region closest to your location from the list.

If you do *not* want to automatically adjust the clock for daylight saving time, remove the check from the checkbox ().



- 8** Click on the tab for **Date & Time** and go to that page. Check that the date and time are correct. If not, adjust them. Click on **Close**.

9 The first “Add Printer Wizard” window appears. Click on **Next** to set up your printer and go on to the next step.

If you do not have a printer, click on **Cancel** and skip the remaining steps.



10 The second “Add Printer Wizard” window appears.

If your manufacturer is listed in the **Manufacturers:** list:

a) Click on your printer manufacturer.

If your printer model is listed in the **Printers:** list:

b) Select your printer from the **Printers:** list and click on **Next**.

c) Skip to step 11.

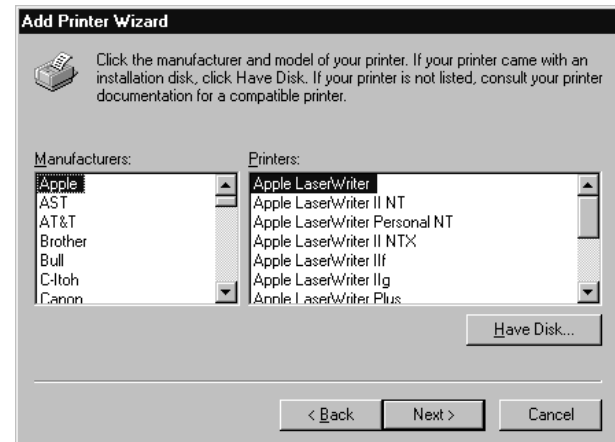
If your manufacturer or printer is not listed:

a) Click on **Have Disk**. The “Install from Disk” window appears.

b) Insert the device driver diskettes that came with your printer into the diskette drive and click on **OK**.

c) Select your printer from the list and click on **Next**.

d) Go to the next step.



- 11** The third “Add Printer Wizard” window appears. Select the port you want to use with the printer, and click on **Next**. The **LPT1** is a default selection.



- 12** The fourth “Add Printer Wizard” window appears. Type in a name you want for your printer, and click on **Next**.

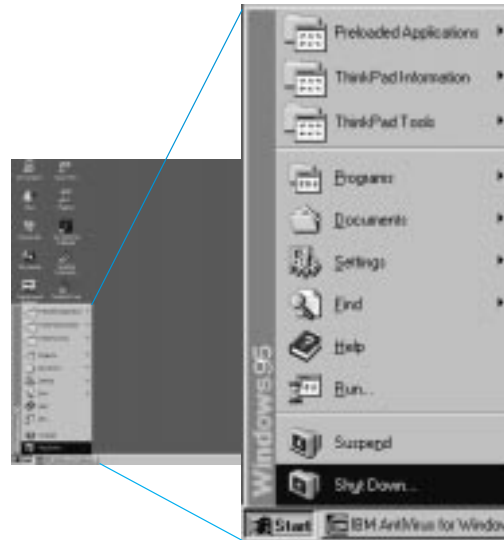


- 13** The last “Add Printer Wizard” window appears. Select **Yes** and click on **Finish**.



Shutting Down Windows

- 1 Click on **Start** at the bottom left corner of the screen. The following menu appears:



Note: This sample is a Windows 95 shutdown, Windows NT has the same shut down procedure.

- 2 Click on **Shut Down...** A confirmation message appears.
- 3 Click on **Yes** if you want to Shut down the computer. The **Shut down the computer?** is the default selection.
If your computer has the Windows 95 operating system, the power turns off automatically.
If your computer has the Windows NT operating system, you must turn off the power.

For More Information

ThinkPad 770 Up and Running explains the steps for typical tasks.

ThinkPad 770 User's Guide explains the functions of your ThinkPad computer in detail.

Introducing Microsoft Windows 95 explains the Windows 95 functions in detail.

Introducing Microsoft Windows NT explains the Windows NT functions in detail.

You can get support information through the IBM Internet home page, at the following URL:

<http://www.pc.ibm.com>

IBM

Part Number: 06J0766

Printed in the United States of America

