



IBM Software Group

2005 B2B Customer Conference

Pioneering New Horizons – Solutions that Evolve

Destination WDI 3.2... A Migration Experience

Beth Atkinson
e-Business Analyst
Food Lion, LLC



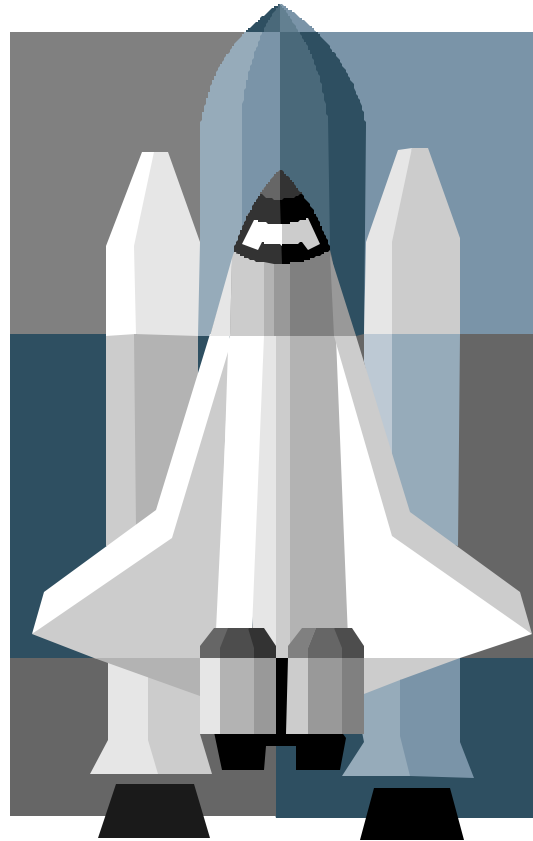
WebSphere. software



ON DEMAND BUSINESS

© IBM Corporation

WDI 3.2.1 BLAST OFF!



Are we there yet?



Objectives

- **Company Profile**
- **e-Business**
- **EDI Overview**
- **WDI Migration**
 - **Goals**
 - **Challenges & Learnings**



1st Standards Upgrade After Migration

- **Future Plans**



United States:
1,523 stores; USD 15.8 billion sales

Belgium, Luxembourg, Germany:
747 stores; EUR 3.9 billion sales

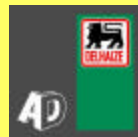
**Southern
& Central
Europe:**
253 stores
EUR
1.2 billion
sales



2,565 stores
Sales EUR
18.0 billion
Operating profit:
EUR 820 million
Earnings before
goodwill and
exceptionals:
EUR 410 million

Asia:
42 stores; EUR 135.6 million sales

M Soft
ze





Food Lion Company Profile

- **One of the Largest Supermarket Chains in US**
- **70,000 Associates**
- **1,200+ Stores in 11 States**
- **7 Distribution Centers in 5 States**
- **10 million+ Customers per Week**
- **Offering 28,000 items**
- **Fleet / 525 Tractors / Over 58 Million Miles in 2004**
 - **DC 1 - Salisbury, NC - 39,000 gallons fuel / week**
 - **Operating Costs – 1.80 / mile**



Food Lion e-Business Team



Toni



**Linda
(Team Lead)**



Specialists



Rhonda



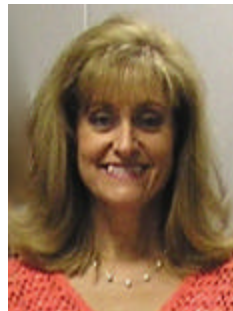
**Carolyn Hager
e-Business
Manager**

Analysts

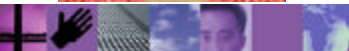


Beth

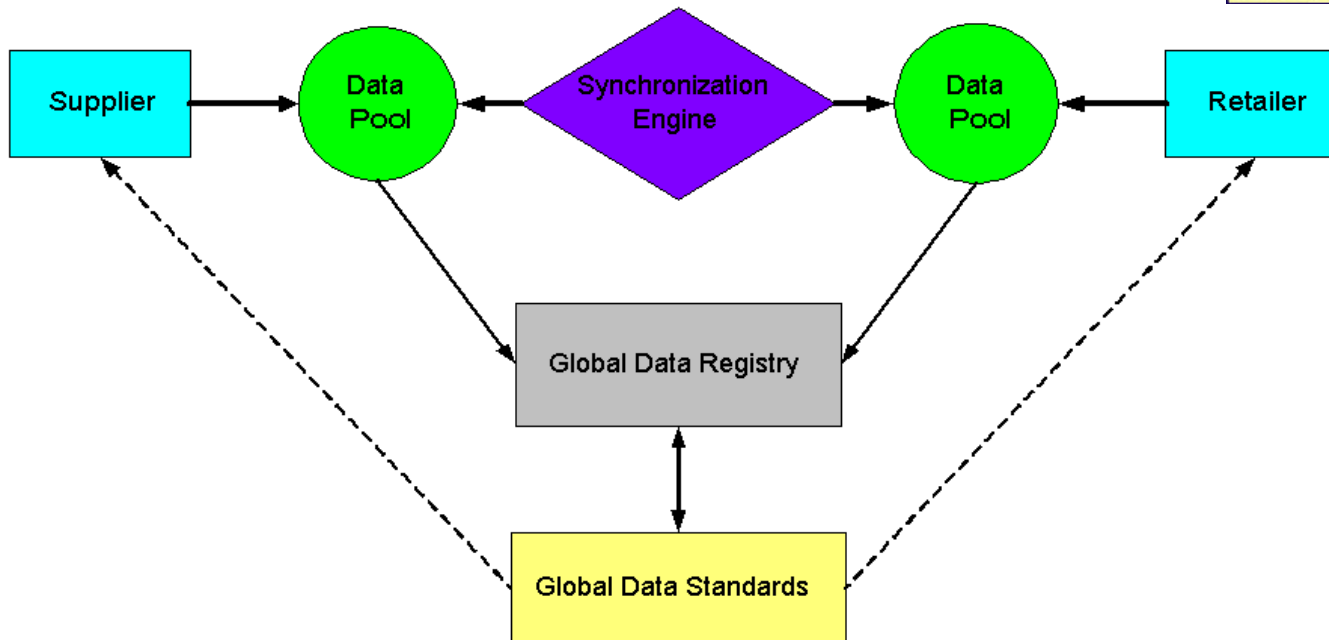
Mary Jane



Samia



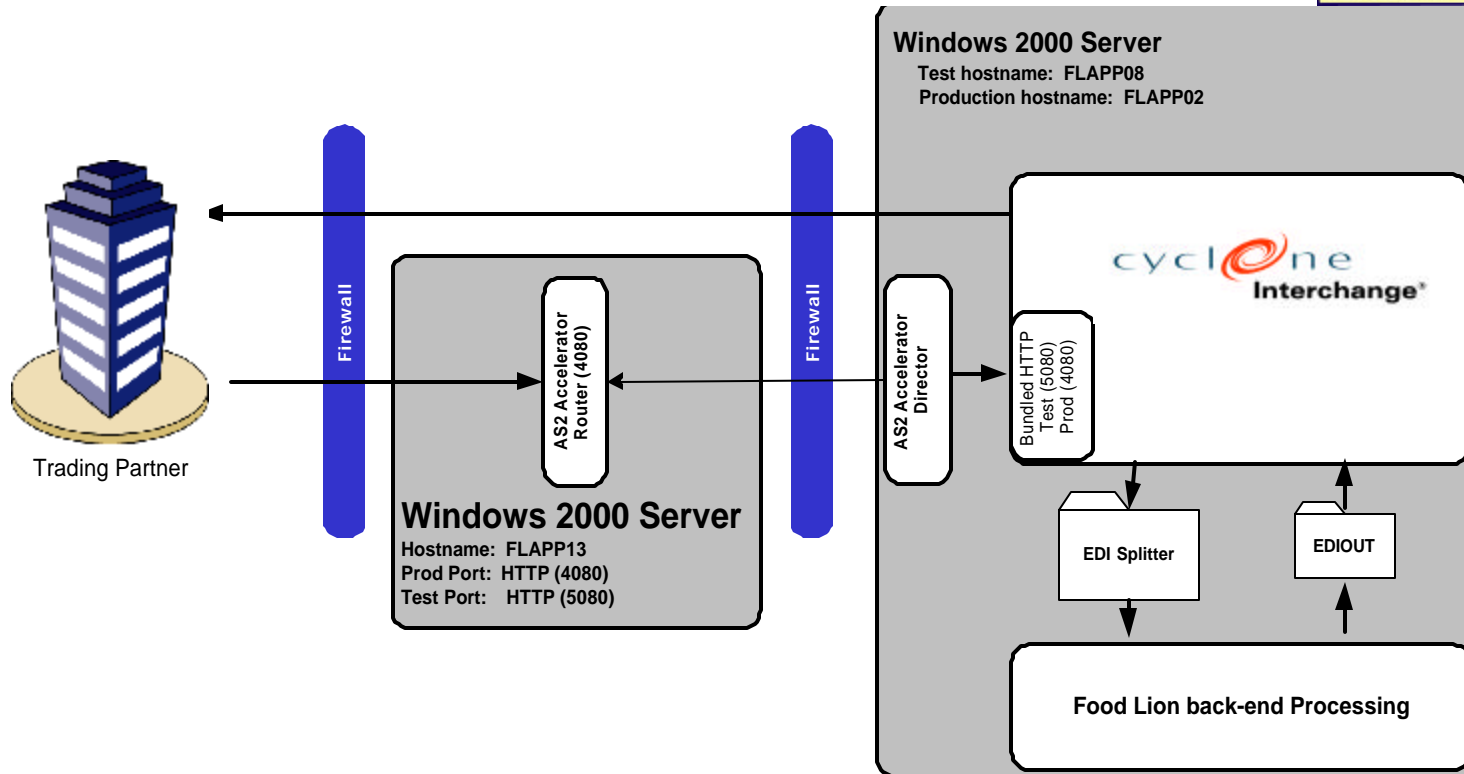
e-Business – Global Data Synchronization



A flexible, scalable global model has been agreed too for *continuous, automated* data synchronization.



e-Business – AS2 Overview



e-Business - EDI Overview



- **2000+ Trading Partners Supported**
- **31 EDI Transactions Supported**
 - **Supply Chain/Procurement**
 - **Financials**
 - **HIPAA**
 - **Risk Management**



WebSphere software



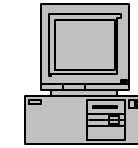
Host / Database

Client



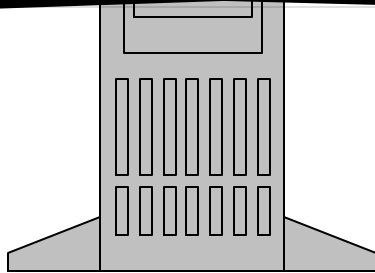
WDI 3.2

DB2 Connect

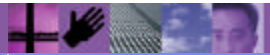


Desktop Client

on



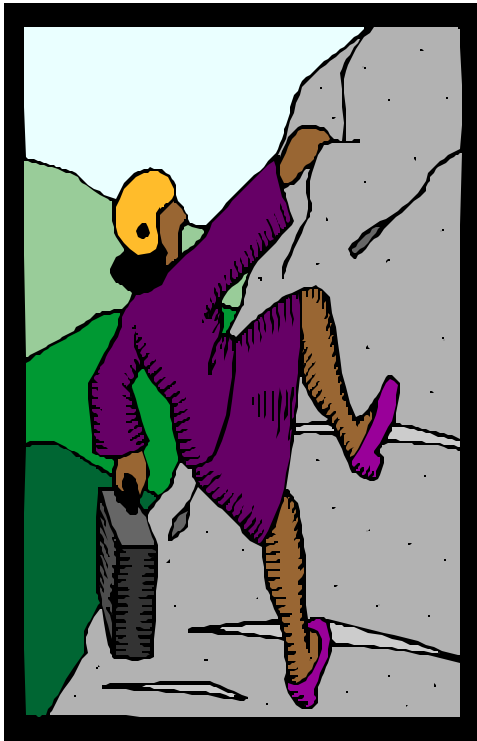
z/OS 390
Host and User Interface



Pioneering New Horizons – Solutions that Evolve

© IBM Corporation

Migration to WDI - Challenges and Learnings



- **Client - Knowledge / Confidence**
- **Client/Server Infrastructure**
- **Changes in Terminology**
- **Inability to Migrate Transaction Store Data**
- **WDI Standards / X12 Upgrade**

Migration to WDI - Future Plans

- All New Development to be DT Map
- Convert Send/Receive Maps to Data Transformation Maps
- Move all Inbound EDI Translation to CICS
- Evaluate available Functionality within WDI
 - Transaction Store
 - Trading Partner Profiles
 - Potential for Other Enterprise Solutions



