

CS4231 and CS4248 Device Drivers

Features

- Support wave audio capture, playback under Windows 3.1 & NT
- Highly optimized code for maximum throughput, minimum CPU utilization
- Input & Output volume/mixing control
- Support ADPCM compression & decompression
- Full Duplex audio capture & playback
- Complete with installation routines, documentation, etc.

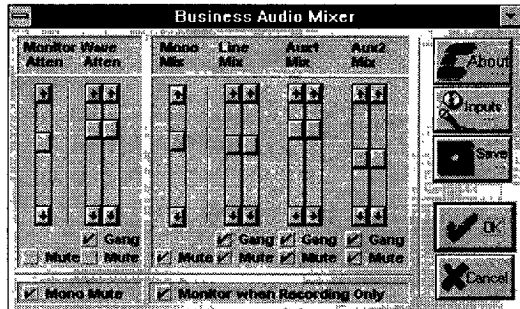
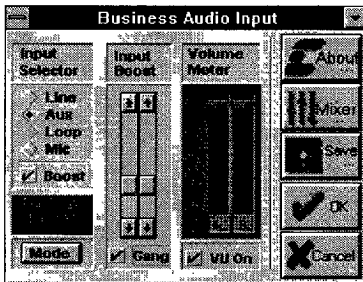
General Description

Crystal offers complete wave driver support for the Microsoft Windows 3.1 & NT environments. CS4231 drivers supports full duplex operation -- i.e. simultaneous capture and playback. Full duplex permits voice recognition to control multimedia playback. Control panel applets are provided supporting all features of the CS4248 and CS4231 devices. Functions include: 1) Input control panel used to select audio source and individually set the gain level, turn dither on/off, and visually monitor recording levels with a VU meter; 2) Output control panel used to control volume, mixer levels and loopback monitoring; 3) Recorder applet used to capture and playback .WAV files, at various sample frequencies, with compression & de-compression (ADPCM, ULaw & ALaw). The recorder is an OLE server.

All source code was developed in-house. Object code is provided without licensing fees directly by Crystal. Sample copies are available.

ORDERING INFORMATION

Contact Crystal Semiconductor



Product Preview

This document contains information for a new product. Crystal Semiconductor reserves the right to modify this product without notice.

Crystal Semiconductor Corporation
P.O. Box 17847, Austin, TX 78760
(512) 445 7222 Fax: (512) 462 2723

Copyright © Crystal Semiconductor Corporation 1993
(All Rights Reserved)

NOV. '93
DS132PP1
4-263

■ 2546324 0005977 180 ■CYS